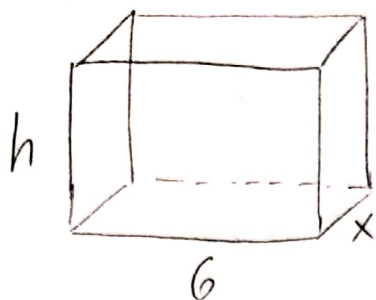


41/786

28/4/20

6' C' R' n3???



n^o 56 n n N C n

$$h \cdot 4 + 6 \cdot 4 + x \cdot 4 = 56$$

$$4(h + 6 + x) = 56 \quad | :4$$

$$h + 6 + x = 14$$

$$h + x = 8$$

$$h = (8 - x)$$

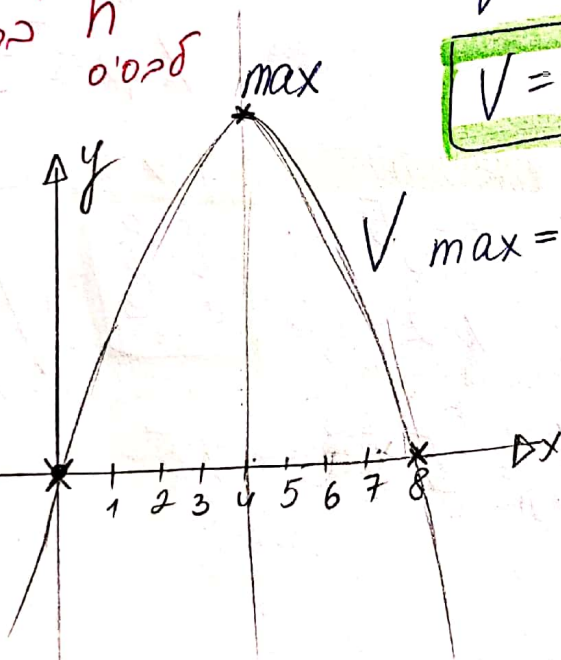
$$V = \int_{0}^8 h$$

$$V = 6 \cdot x \cdot (8 - x)$$

$$V = 48x - 6x^2$$

x	0	4	8
y	0	96	0

$$x_k = -\frac{b}{2a}$$



$$y = -6x^2 + 48x$$

$$a = -6$$

$$b = 48$$

$$x_k = -\frac{48}{2(-6)} = 4$$

$$y_k = 48 \cdot 4 - 6 \cdot 4^2 = 96$$

$$(4, 96)$$

$$y = 0 \quad 6x(8-x) = 0$$

$$x = 0 \text{ or } 8 = x$$

$$x = 4 \text{ n } y$$

$$h = 8 - 4 = 4$$

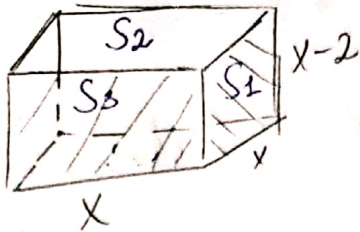
$$x = 4$$

$$h = 4$$

$$V_{\max} = 96$$

max V n n n n n

40/786



$$S = 2S_1 + 2S_3 = 60$$

$$2S_3 = 60$$

$$S_1 = x \cdot (x-2) = x^2 - 2x$$

$$S_3 = x(x-2) = x^2 - 2x$$

$$S = 2(x^2 - 2x + x^2 - 2x) = (2x^2 - 4x) \cdot 2$$

$$2x^2 - 4x = 30$$

$$2x^2 - 4x - 30 = 0$$

$$a = 2$$

$$b = -4$$

$$c = -30$$

$$\Delta = (-4)^2 - 4 \cdot 2 \cdot (-30) = 256$$

$$\sqrt{\Delta} = 16$$

$$x_{1,2} = \frac{4 \pm 16}{2 \cdot 2} = \begin{cases} 5 \\ -3 \end{cases}$$

0-N מפתח של דגושה

$$\Delta = b^2 - 4ac$$

$$x_{1,2} = \frac{-b \pm \sqrt{\Delta}}{2a}$$

התבנה מ'קות

הקטנים של

$$x = 5$$

$$\begin{cases} a = 5 \\ b = 5 \\ c = 3 \end{cases}$$

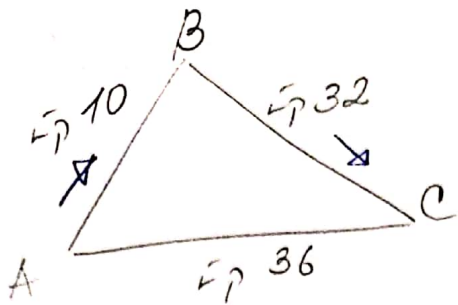
התבנה דוקנה

$$x-2 = 3$$

$$V = a \cdot b \cdot c$$

$$V_{\text{תבנה}} = 5 \cdot 5 \cdot 3 = 75$$

34/786



$AC = 36$

$AB = 10$

$BC = 32$

1) $AC = 36$

2) $AC = AB + BC = 42$
 צ"ש א"נ

ש"פ	V ש"פ	t ז	
36	X	$\frac{36}{X}$	710'N AC
10	X-4	$\frac{10}{X-4}$	7'88 AB
32	X+8	$\frac{32}{X+8}$	73171 BC

$x \neq 20$

$S = V \cdot t$
 $V = \frac{S}{t}$
 $t = \frac{S}{V}$

$t_{AC} = t_{AB} + t_{BC}$
 $\frac{(x+8)(x-4)}{36} = \frac{10}{x-4} + \frac{32}{x+8}$ | נ"נ

$36(x+8)(x-4) = 10x(x+8) + 32x(x-4)$

$36(x^2 + 8x - 4x - 32) = 10(x^2 + 8x) + 32(x^2 - 4x)$ | :2

$18(x^2 + 4x - 32) = 5(x^2 + 8x) + 16(x^2 - 4x)$

$18x^2 + 72x - 576 - 5x^2 - 40x - 16x^2 + 64x = 0$

$-3x^2 + 96x - 576 = 0$

$a = -3$
 $b = 96$
 $c = -576$

$\Delta = 96^2 - 4 \cdot (-3) \cdot (-576)$

$\sqrt{\Delta} = 48$

$x_{1,2} = \frac{-96 \pm 48}{2 \cdot (-3)} = \begin{matrix} 8 \\ 24 \end{matrix}$

התשובה היא 8
 צ"ש א"נ

$x = 8$
 צ"ש א"נ

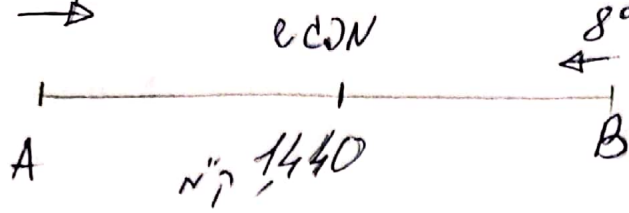
צ"ש א"נ

26/4/20

35/785

$V=x$
 700
 \rightarrow

$V=x+10$
 800
 \leftarrow



מ"ק S	$V_{\text{מ"ק}}$	t e	
720	X	t	B ו A N
720	X+10	t-1	A ו B N

1440 : 2 = 720, 720 מ"ק ו 3 נק S

1) $X \cdot t = 720$
 $(x+10)(t-1) = 720$

$\Rightarrow xt = (x+10)(t-1)$
 $xt = xt + 10t - 10 - x$

$t > 0$

$x = 10t - 10$ (1)

2) $x \cdot t = 720$
 $x = \frac{720}{t}$ (2)

$\begin{cases} x = 10t - 10 \\ x = \frac{720}{t} \end{cases} \Rightarrow 10t - 10 = \frac{720}{t} \cdot t$
 $720 = 10(t^2 - t) \div 10$

$a=1$
 $b=-1$
 $c=-72$

$72 = t^2 - t$
 $t^2 - t - 72 = 0$
 $\Delta = (-1)^2 - 4 \cdot 1 \cdot (-72) = 289$
 $\sqrt{\Delta} = 17$

3) $700 + 9 = 1600$
ע"מ
ה'ס"ו

$t_{1,2} = \frac{1 \pm 17}{2 \cdot 1} \begin{matrix} 9 \\ -8 \end{matrix}$
p'ק' N ר'ס

1600 תשובה: הרכבות תכנסנה קשה ה 1600